

# **AusGUIDE**

---

## AusGUIDELines

---

### *1. The Logical Framework Approach*



Australian Agency for International Development  
The Australian Government's



# 1. The Logical Framework Approach

## CONTENTS

<b>1.1</b>	<b>Overview</b>	<b>1</b>
	What is the Logical Framework Approach?	1
	The history of LFA	2
	When should LFA be used?	3
	Who should be involved?	3
<b>1.2</b>	<b>Analysing the situation</b>	<b>3</b>
	Problem analysis and the problem tree	4
	Stakeholder analysis	6
	Analysis of objectives	10
	Analysis of alternative strategies	10
	Link to the Logframe matrix	11
<b>1.3</b>	<b>The Logframe matrix</b>	<b>15</b>
	Format	15
	Terminology	16
	Vertical Logic	17
	Assumptions and risks	21
	Horizontal logic	23
	Some strengths and weaknesses of LFA	28
<b>1.4</b>	<b>Implementation, resource and cost schedules</b>	<b>29</b>

---

ATTACHMENTS

<b>Annex 1 – Steps in conducting problem tree analysis</b>	<b>30</b>
<b>Annex 2 - Examples of outputs for key result areas</b>	<b>32</b>
<b>Annex 3 - Logframe Matrix examples</b>	<b>35</b>

FIGURES

<b>Figure 1 Logframe Matrix structure</b>	<b>2</b>
<b>Figure 2 Problem tree structure</b>	<b>4</b>
<b>Figure 4 Stakeholder analysis matrix – How affected by the problem(s)</b>	<b>9</b>
<b>Figure 5 Stakeholder analysis matrix – Expected impacts of proposed intervention/solution</b>	<b>9</b>
<b>Figure 6: Objective tree example – (derived from the problem tree in Figure 3)</b>	<b>13</b>
<b>Figure 7 Logframe matrix structure and sequence for completion</b>	<b>15</b>
<b>Figure 8 Project components flow chart</b>	<b>19</b>
<b>Figure 9 Project and contractible outputs</b>	<b>21</b>
<b>Figure 10 Relationship between assumptions and objectives</b>	<b>22</b>
<b>Figure 11 Assumptions Decision Tree</b>	<b>23</b>
<b>Figure 12 The Logframe and monitoring and evaluation</b>	<b>24</b>
<b>Figure 13 Example of indicators of development process</b>	<b>28</b>
<b>Figure 14 Strengths and weaknesses of LFA</b>	<b>29</b>

---

# 1. The Logical Framework Approach

## 1.1 Overview

Preparing a Logframe matrix is normally required by AusAID as part of its project and program design procedures. These guidelines on the Logical Framework Approach (LFA) are therefore provided as a reference for AusAID officers and consultants involved in project preparation. The aim is to support informed (and more consistent) application of this useful analytical, presentational and management tool.

The Logical Framework Approach is an 'aid to thinking', not a substitute for creative analysis. Testing of innovative new ways in which to use the analytical framework provided by LFA is encouraged.

While the focus of these guidelines is on the 'project', the analytical principles can be applied equally well to the design of programs, and even sector or country program strategies.

### What is the Logical Framework Approach?

LFA is an analytical, presentational and management tool which can help planners and managers:

- analyse the existing situation during project preparation;
- establish a logical hierarchy of means by which objectives will be reached;
- identify the potential risks to achieving the objectives, and to sustainable outcomes;
- establish how outputs and outcomes might best be monitored and evaluated;
- present a summary of the project in a standard format; and
- monitor and review projects during implementation.

A distinction is usefully made between what is known as the Logical Framework Approach (LFA) and the Logical Framework Matrix. The **approach** involves problem analysis, stakeholder analysis, developing a hierarchy of objectives and selecting a preferred implementation strategy. The product of this analytical approach is the **matrix** (the Logframe), which summarises what the project intends to do and how, what the key assumptions are, and how outputs and outcomes will be monitored and evaluated.

The matrix structure is shown in Figure 1, together with a brief description of the information that the matrix contains.

## The history of LFA

LFA was first formally adopted as a planning tool for overseas development activities by USAID in the early 1970s. Its origins can be traced back to private sector management theory, such as the 'management by objectives' approach which initially became popular in the 1960s.

LFA has since been adopted, and adapted as a planning and management tool by a large number of agencies involved in providing development assistance. These include the British DFID, Canada's CIDA, the OECD Expert Group on Aid Evaluation, the International Service for National Agricultural Research (ISNAR), Australia's AusAID and Germany's GTZ. AusAID has been using LFA as a formal part of its activity cycle management procedures since the mid-1980s.

While it is not without its critics, LFA has proved popular and its use continues to expand into new agencies. It helps to provide a standardised summary of the project and its logic which can be used across the agency.

**Figure 1 Logframe Matrix structure**

<b>Project Description</b>	<b>Performance Indicators</b>	<b>Means of Verification</b>	<b>Assumptions</b>
Goal: The broader development impact to which the project contributes – at a national and sectoral level.	Measures of the extent to which a sustainable contribution to the goal has been made. Used during evaluation.	Sources of information and methods used to collect and report it.	
Purpose: The development outcome expected at the end of the project. All components will contribute to this.	Conditions at the end of the project indicating that the Purpose has been achieved and that benefits are sustainable.. Used for project completion and evaluation.	Sources of information and methods used to collect and report it.	Assumptions concerning the purpose/goal linkage.
Component Objectives: The expected outcome of producing each component's outputs.	Measures of the extent to which component objectives have been achieved and lead to sustainable benefits.. Used during review and evaluation.	Sources of information and methods used to collect and report it.	Assumptions concerning the component objective/purpose linkage.
Outputs: The direct measurable results (goods and services) of the project which are largely under project management's control	Measures of the quantity and quality of outputs and the timing of their delivery. Used during monitoring and review.	Sources of information and methods used to collect and report it.	Assumptions concerning the output/component objective linkage.
Activities: The tasks carried out to implement the project and deliver the identified outputs.	Implementation/work program targets. Used during monitoring.	Sources of information and methods used to collect and report it.	Assumptions concerning the activity/output linkage.

## When should LFA be used?

LFA can be used throughout the activity management cycle in:

- **identifying** and assessing activities that fit within the scope of country programs;
- **preparing** the project design in a systematic and logical way;
- **appraising** project designs;
- **implementing** approved projects; and
- monitoring, reviewing and evaluating project progress and performance.

LFA is best started early in the Activity Cycle but the same analytical tools can be used to help review and restructure ongoing projects which have not previously been designed using LFA principles. As LFA is an 'aid to thinking', it has widespread and flexible application.

## Who should be involved?

Project planning and management should always be approached as a team task. This requires that adequate opportunity be given to colleagues and key stakeholders to provide input to the process and product of LFA. This can be supported by:

- taking time to explain the principles of LFA and clarifying the terminology used;
- integrating effective team work and adult learning methods into meetings with stakeholder groups; and
- ensuring that stakeholder groups are involved in the initial situation and/or problem analysis.

However, LFA is not a tool that all community members should necessarily be required to understand or use. While 'logical' in concept, its effective application poses many challenges, even to the experienced user.

## 1.2 Analysing the situation

Prior to beginning work on project design and the construction of a Logframe matrix it is important to undertake a structured analysis of the existing situation. LFA incorporates four main analytical elements to help **guide** this process:

- problem analysis;
- stakeholder analysis;
- objectives analysis;
- identification of risks; and
- selection of a preferred implementation strategy.

Each element is described further below.

It is important to emphasise that effective development planning should be approached as an iterative process, not as a linear set of prescribed steps. For example, while stakeholder analysis is presented in these Guidelines as coming after problem analysis, in practice, stakeholder analysis is ongoing throughout the design process, and does not neatly fit in to any one step. Indeed, some preliminary stakeholder analysis is required prior to problem analysis in order to clarify who should be involved in the analysis of

problems. These Guidelines should not be seen as prescribing a formulaic approach to project design.

## Problem analysis and the problem tree

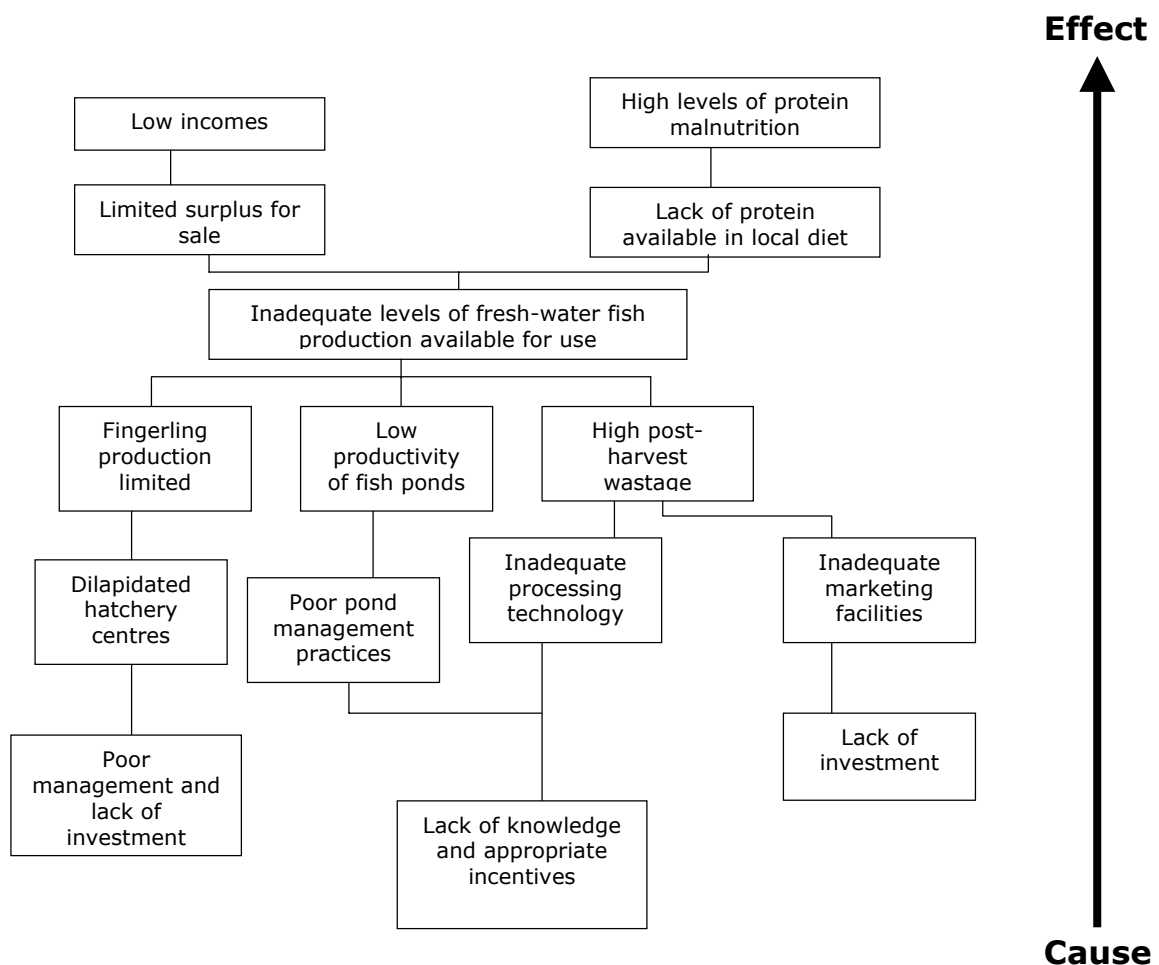
### Overview

Development projects are usually proposed as a response to addressing and overcoming identified development problems. Problem analysis involves identifying what the main problems are and establishing the cause and effect relationships between these problems. The key purpose of this analysis is to try and ensure that 'root causes' are identified and subsequently addressed in the project design, not just the symptoms of the problem(s). A clear and comprehensive problem analysis provides a sound foundation on which to develop a set of relevant and focused project objectives.

A useful medical analogy can be used to emphasise this point: If you go to the doctor with a bad headache, and the doctor prescribes a pain killer without any further detailed diagnosis, the doctor is treating the **effect** and not the **cause** of your problem. Without finding out what is causing the headache in the first place, it is likely that pain will persist as soon as the medication wears off. Projects which only address the effects of problems, and not underlying causes, are therefore unlikely to bring about sustainable benefits.

One main tool used in problem analysis is the 'problem tree', a simplified example of which is shown in Figure 2 for an aquaculture project.

**Figure 2 Problem tree structure**





Important points to note about using the problem tree tool are:

- There are two main approaches that can be used to help give focus to the problem analysis, namely: (i) the 'focal problem' method, whereby development problems (or constraints) are brainstormed by the group, a core or focal problem is identified, and the cause and effect analysis then pivots around the focal problem; or (ii) the 'objectives oriented' method, whereby a broad/high level development objective is specified at the start of the analysis, and constraints to achieving this objective are then brainstormed, analysed and sorted in to a cause and effect logic. Both approaches are equally valid, and which to use is largely up to individual preference and circumstances.
- Problem analysis should be undertaken as a group learning activity involving stakeholders, including beneficiaries, who can contribute relevant technical and local knowledge. A workshop environment (involving groups of up to 25 carefully selected participants) is an appropriate forum for developing problem trees, analysing the results, and then proposing solutions;
- It may be appropriate to undertake a number of separate problem analysis exercises with different stakeholder groups, to help determine different perspectives and how priorities vary;
- The process is as important as the product. The exercise should be presented as a learning experience for all those involved, and as an opportunity for different views and interests to be presented and discussed. However, one should not necessarily expect full consensus among stakeholders on what the priority problems are; and
- It is important to recognise that the product (the problem tree diagram) should provide a simplified but nevertheless robust version of reality. If it is too complicated, it is likely to be less useful in providing direction to subsequent steps in the analysis.

## Preparatory steps

Before starting work on preparing a problem tree:

**Clarify the scope of the investigation or analysis.** If you are participating in a project preparation mission, others will have already identified (at least to some extent) the main development problems they are concerned with, or opportunities they have seen. Understanding this will help you focus and structure the direction of the analysis. You will not want, or be able, to deal with a limitless range of problems. This information should thus help you to identify either an appropriate objective, or focal problem, to help give focus to the problem tree analysis.

**Inform yourself further.** Collect and review existing background information on the main issue(s) of concern and on the geographic area(s) you will be working in. Are you clear what the main issues are, or are likely to be?

**Identify the relevant stakeholder group(s).** Who do you need to bring together to ensure the group is well informed and can help to analyse and discuss the main issues that the analysis will focus on? For example, if you are looking at a health and sanitation problem which may require a water supply as part of the solution, make sure that you have available to join you a water supply engineer and an environmental health officer (among others). Also, be sure to involve community representatives that you believe would be willing and able to contribute to this kind of exercise. A representative and technically competent group is required to help effectively identify, analyse and organise ideas.

Participants need to be informed to be useful and productive. They should know why they are doing the analysis, what the process involves and what information they are expected to contribute.

**Conduct the analysis.** A description of the main steps to follow in conducting a problem tree analysis using the focal problem method is provided at Annex 1 to these Guidelines. Cards, marker pens, wall space for display and some means of sticking and moving cards on the display area are essential to undertaking this exercise successfully.

An example of a problem tree diagram that was prepared as a group activity for a training project in Fiji is shown in Figure 3.

Once the group is generally happy with the main elements of the problem tree, move on to investigating and documenting possible project solutions through using stakeholder analysis, the objective tree, alternatives analysis and finally the Logical Framework Matrix itself. Remember that planning is an iterative process and that elements of both problem analysis and stakeholder analysis will need to be revisited on an ongoing basis as new information and ideas come to light.

## Stakeholder analysis

Having identified the main problems and the cause and effect relationship between them, it is then important to give further consideration to **who** these problems actually impact on most, and what the roles and interests of different stakeholders might be in addressing the problems and reaching solutions.

On some occasions it may be advisable to undertake the stakeholder analysis (or an initial stakeholder analysis) before embarking on the problem analysis. For example, if it is likely that there are strong competing interests within the stakeholders that may influence their input into the analysis of the development problem, then this should be known beforehand so that the problem analysis can be made more objective and favour poverty reduction.

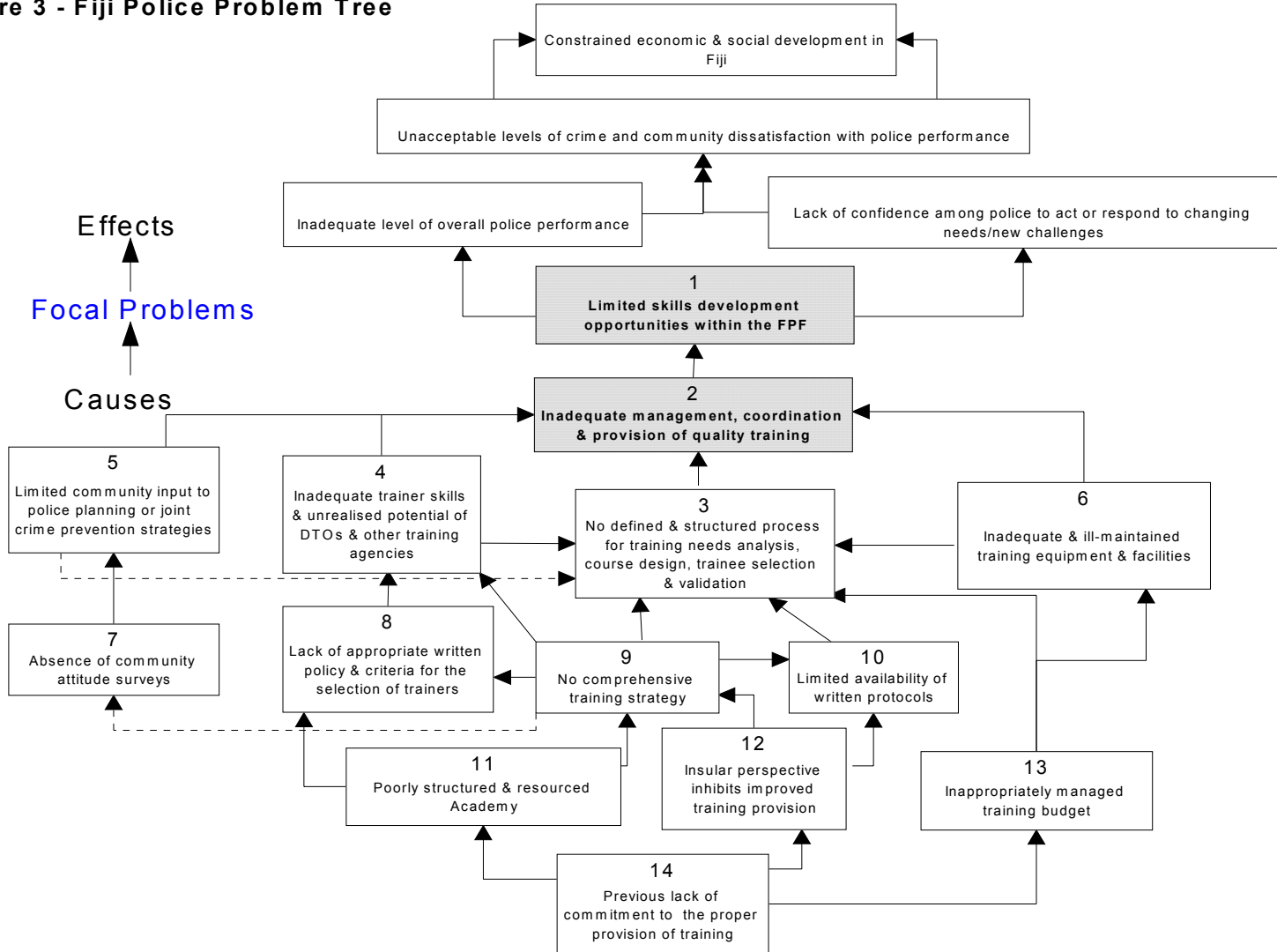
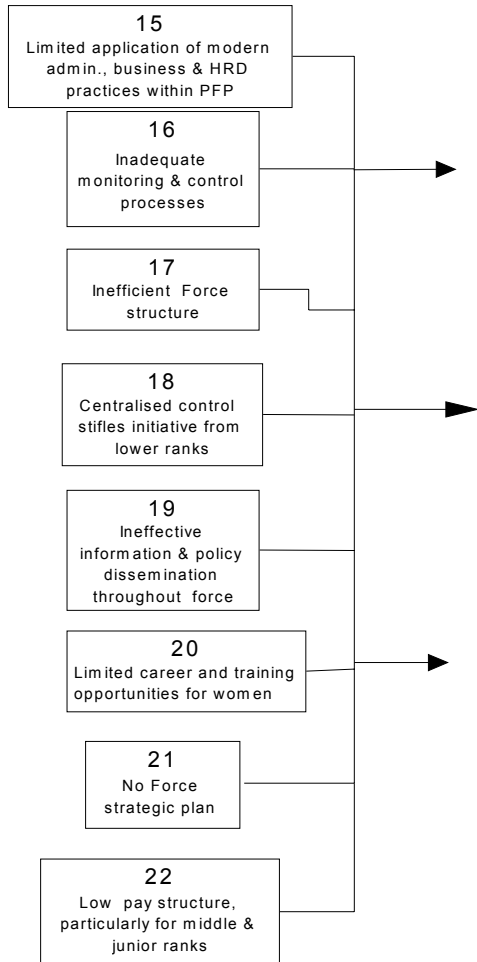
The main purposes of stakeholder analysis are:

- To better address distributional and social impacts of projects, programs and policies; and
- To identify existing or potential conflicts of interest, and factor appropriate mitigation strategies into activity design.

Stakeholder analysis is about asking the questions: "Whose problem" and, if a project intervention strategy is proposed: "Who will benefit?". Stakeholder analysis is thus an essential element of poverty analysis.

Figure 3 - Fiji Police Problem Tree

**OVERALL CONSTRAINTS**



The main steps in stakeholder analysis include:

- Identifying the principal stakeholders (these can be various levels, eg local, regional, national);
- Investigating their roles, interests, relative power and capacity to participate;
- Identifying the extent of cooperation or conflict in the relationship between stakeholders; and
- Interpreting the findings of the analysis and defining how this should be incorporated into project design.

When looking at who the stakeholders are, it is useful to distinguish between the 'target group' and the broader group of stakeholders (the target group being one of the principal stakeholders).

### **Target group**

The target group are those who are directly affected by the problems in question and who might be beneficiaries of any proposed project solution.

Within any geographic area and within any 'community' there will always be considerable differences in people's access to resources and development opportunities. Some individuals and groups will be benefiting from the existing social, political or economic relationships and some will not. It is therefore important to gain some understanding about how different groups within the community are affected by specific development problems.

Similarly, once we choose a particular project intervention, there will usually be some groups who will benefit more than others. It is important to understand this so that the risks of pursuing the project strategy can be assessed in regard to the likely social and political support and opposition to the planned project. Strategies can then be devised to counter opposition, and/or strengthen support. The identification and appropriate involvement of the target group or beneficiaries in project design and implementation is also a critical factor in promoting the ultimate sustainability of the benefits.

The groups who might be specifically considered in any such analysis would depend on the nature of the problems, but could include:

- Men/women;
- Rich/poor;
- Young/old;
- Small scale/large scale farmers;
- Rural/urban dwellers;
- Landowners/landless; and
- Farmers/traders.

Each of these groups need to be clearly defined so that there is little ambiguity as to who we are talking about.

## Other Stakeholders

Stakeholders include both the target group and other government or private agencies (or groups) who have an interest in, or a responsibility for, addressing the identified development problems. Stakeholders might include individuals, communities, institutions, commercial groups, policy makers or Government line agencies.

For most bilateral aid projects the partner government's implementing line agencies will be primary stakeholders. Adequate analysis of their roles, interests and capacity to participate should therefore be factored into project preparation.

An example of two matrix formats that can be used to help structure a stakeholder analysis are shown in Figure 4. The first can be used to provide a summary profile of how different stakeholders are affected by the main problem(s), and the second summarises how a proposed project intervention might affect different groups. The second matrix would therefore not be completed until after potential project objectives had been identified.

**Figure 4 Stakeholder analysis matrix – How affected by the problem(s)**

Stakeholder	How affected by the problem(s)?	Capacity/motivation to participate in addressing the problem(s)	Relationship with other stakeholders (eg partnership or conflict)

**Figure 5 Stakeholder analysis matrix – Expected impacts of proposed intervention/solution**

Stakeholder	Stakeholder's main objectives	Positive impacts/benefits	Negative impacts/costs	Net impact

Both of these matrix formats can be adapted to include different or additional information about the main stakeholder groups depending on the scope and focus of the issues being addressed.

It is important to see stakeholder analysis as part of the iterative process of project planning. As both problems and potential project objectives are analysed in more detail, the stakeholder analysis should be reviewed and updated to account for the new information which comes to light.

## Analysis of objectives

Objective trees should be prepared after the problem tree has been completed and an initial stakeholder analysis has been undertaken.

In its simplest form, the objective tree uses exactly the same structure as the problem tree, but with the problem statements (negatives) turned into objective statements (positives). However, the results of the stakeholder analysis may have helped to give better focus to priority problems and not all of the original problem statements may therefore need to be translated into objective statements.

While the problem tree shows the **cause and effect** relationship between problems, the objective tree shows the **means - end** relationship between objectives. This leads directly into developing the project's narrative description in the Logical Framework Matrix.

Once the negative statements from the problem tree have been re-worded to positive statements, you should then check:

- Are the statements clear and unambiguous?
- Are the links between each statement logical and reasonable? (Will the achievement of one help support the attainment of another that is above it in the hierarchy?)
- Is there a need to add any other positive actions and/or statements? More detail may be required.
- Do the risks to achieving the objectives and also having sustainable outcomes appear to be manageable?
- Are the positive actions at one level sufficient to lead to the result above?
- Is the overall structure simple and clear? Simplify if possible or necessary.

Once these main points have been checked, the proposed objective tree structure can be circulated for further comment and feedback.

An example of an objective tree (developed from the problem tree shown in Figure 3) is shown in Figure 5.

## Analysis of alternative strategies

During the process of analysing the problems, stakeholder issues and developing a draft objective tree, views on the potential merits or difficulties and risks associated with different possible project interventions are likely to have been developed and discussed by the design team. These options then need to be further scrutinised to help firm up the likely scope of the project before more detailed design takes place.

The type of questions that might need to be asked (and answered) could include:

- Should all of the identified problems and/or objectives be tackled, or a selected few?
- What is the combination of interventions that are most likely to bring about the desired results and promote sustainability of benefits?
- What are the likely capital and recurrent cost implications of different possible interventions, and what can be realistically afforded?
- Which strategy will best support participation by both women and men?

- Which strategy will most effectively support institutional strengthening objectives? and
- How can negative environmental impacts be best mitigated?

To assess alternative interventions it is useful to identify and agree on a number of assessment criteria against which alternative interventions can be ranked or scored. Criteria that may be used to help make a broad assessment of different intervention options could include the expected:

- benefits to target groups - equity and participation;
- sustainability of the benefits;
- ability to repair and maintain assets post-project;
- total cost and recurrent cost implications;
- financial and economic viability;
- technical feasibility;
- contribution to institutional strengthening and management capacity building;
- environmental impact; and
- compatibility of project with sector or program priorities.

A project design document should demonstrate to AusAID and the partner government that the main alternative options have been assessed and considered. There is always more than one way to solve a development problem. The aim is to find the best way, subject to meeting specified criteria.

However, it is important to emphasise again that project planning is not a linear process. One does not move mechanically from one step to the next, always in a forward direction, and arrive automatically at the best solution. Planning is an iterative and creative process, and selecting a design option often involves significant leaps in thinking which cannot be neatly slotted into a 'stage' in the planning process.

## Link to the Logframe matrix

Figure 6 shows how the objective tree can be used to start framing the objectives hierarchy in the first column of the Logframe matrix. Objectives at the top of the tree should help frame goal and purpose statements, while further down the tree component objective and output statements can be identified. However, it should not be expected that the objective tree can be transposed **directly**, without further adjustment, into the hierarchy of the project description in the matrix. Further adjustment and refinement of statements is usually required and checking of the means-ends logic should be ongoing as the matrix is developed.

The Fiji Police Training Project logframe matrix is provided as an example in **Logframe matrix examples** (Annex 3).

- 
-





Figure 6: Objective tree example – (derived from the problem tree in Figure 3)

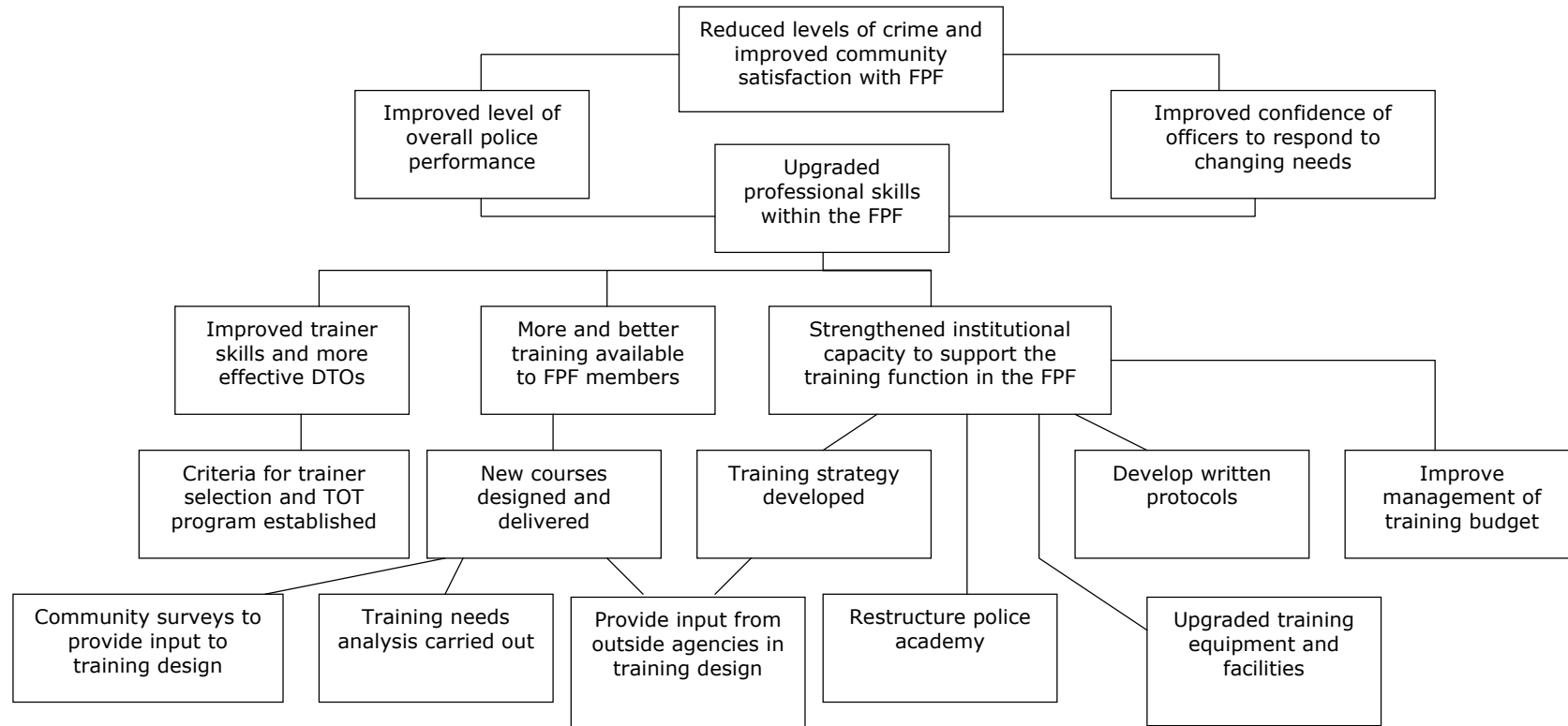
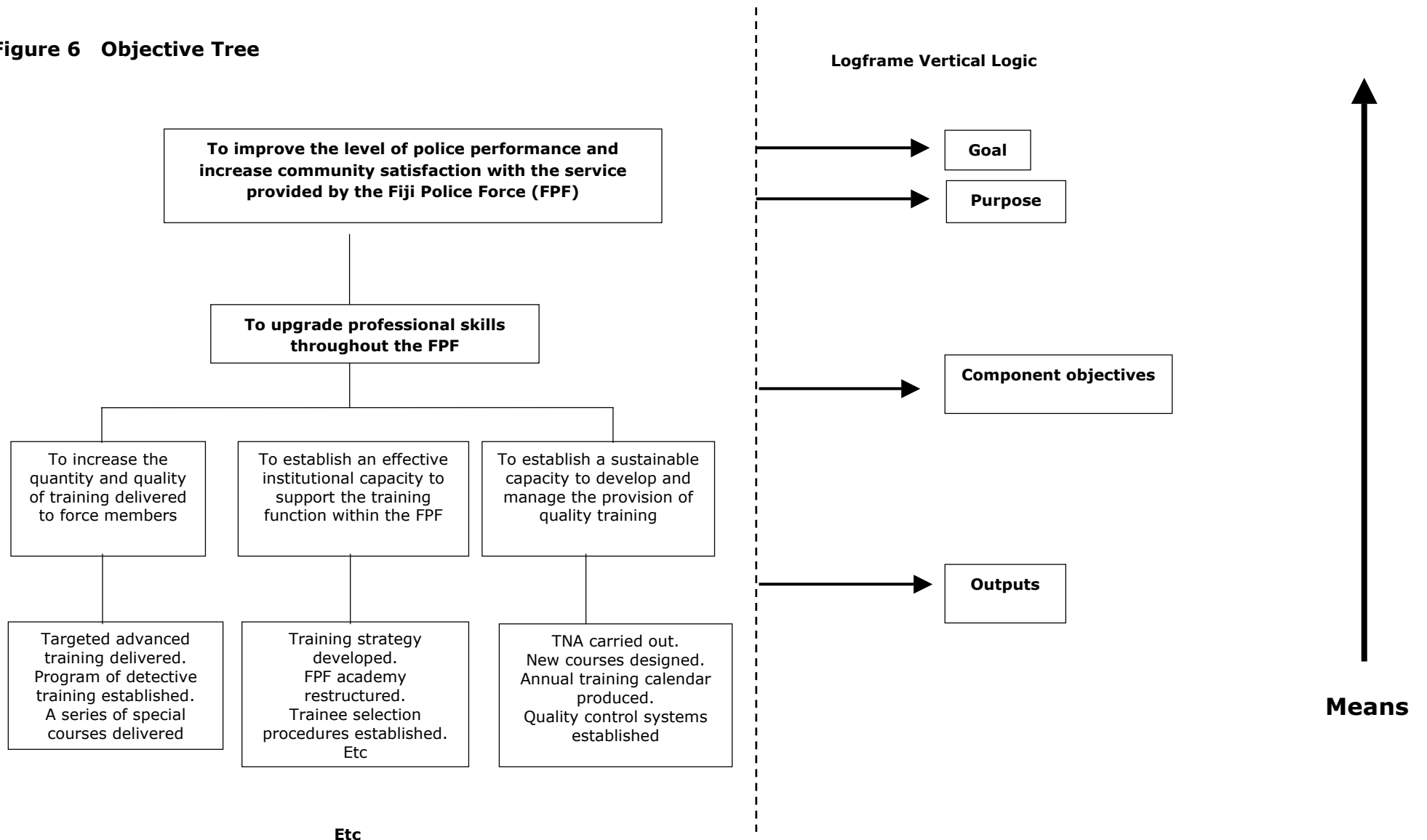


Figure 6 Objective Tree



## 1.3 The Logframe matrix

### Format

The results of the logical framework analysis are presented, and further analysed, through the development of a Logframe matrix. The matrix should provide a **summary** of the project design and, when detailed down to output level, should generally be no more than five pages long. Activities may be listed in the logframe matrix itself, however it may often be better to describe 'indicative' sets of activities (required to deliver each output) in the main narrative of the Project Design Document. The implementation and resource schedules can also be used to further detail when key activities are expected to take place.

The Logframe matrix has four columns and usually four or five rows, depending on the number of levels of objectives used to explain the means-ends relationship of the project.

The **vertical logic** identifies what the project intends to do, clarifies the causal relationships, and specifies the important assumptions and uncertainties beyond the project manager's control (columns 1 and 4).

The **horizontal logic** defines how project objectives specified in the project description will be measured, and the means by which the measurement will be verified (columns 2 and 3). This provides the framework for project monitoring and evaluation.

Figure 7 shows the structure of the matrix and indicates the general sequence for completing its component parts. The project description is completed first, then the assumptions, indicators, and finally the means of verification. However, completing the matrix must be approached as an iterative learning process. As one part of the matrix is completed, there is a need to look back at what has been said in previous parts to review and test whether or not the logic still holds. This process will often require the modification of previous descriptions.

**Figure 7 Logframe matrix structure and sequence for completion**

Project Description	Indicators	Means of verification (MOVs)	Assumptions
1. Goal	10. Indicators	11. MOVs	
2. Purpose	12. Indicators	13. MOVs	9. Assumptions
3. Component Objectives	14. Indicators	15. MOVs	8. Assumptions
4. Outputs	16. Indicators	17. MOVs	7. Assumptions
5. Activities	Milestones specified in activity schedules and scope of services	Work plans and management reports on physical and financial progress	6. Assumptions

The option of whether or not to include both an overall project purpose and component objectives should be left open to the project designers, depending on the scope and complexity of the project. For example, in some cases it may be sufficient to have a goal and component objectives, and to leave out the purpose.

It is also recommended that in most cases the matrix itself should **not** include a listing of the activities required to produce project outputs. The main reason for this is to keep the matrix as a concise summary of **what** the project aims to deliver, rather than specifying in too much detail **how** it will be delivered. Activities required to deliver outputs should instead be separately detailed in an implementation schedule format, using reference numbers to link each group of activities to a specific output, and/or as a narrative description in the main body of the Project Design Document's text.

It is important to keep firmly in mind that the Logframe matrix produced during design is essentially a draft. It provides a snapshot in time. It will need to be reassessed, refined and updated on an ongoing basis once project implementation starts. There is a careful balance to achieve. On the one hand it is important to provide enough detail in the design matrix to provide a clear and logical plan of action (which can be costed and contracted). On the other hand it is important to avoid being too prescriptive and establishing too rigid a structure that is more likely to constrain than facilitate project implementation.

## Terminology

A brief description of the terminology is given below:

**Project description** provides a narrative summary of what the project intends to achieve and how. It describes the means by which desired ends are to be achieved (the vertical logic).

**Goal** refers to the sectoral or national objectives to which the project is designed to contribute in a sustainable way, eg increased incomes, improved nutritional status, reduced crime. The goal helps set the macro-level context within which the project fits, and describes the long-term impact that the project is expected to **contribute** towards (but not itself achieve or be solely accountable for).

**Purpose** refers to what the project is expected to achieve in terms of sustainable development outcome at the end, or soon after, the project life. Examples might include increased agricultural production, higher immunisation coverage, cleaner water, or improved legal services. There should generally be only one purpose statement.

**Component Objectives.** Where the project or program is relatively large and has a number of components (output/activity areas) it is useful to give each component an objective statement. These statements should provide a logical link between the outputs of that component and the project purpose.

**Outputs** refer to the specific results and tangible products (goods and services) produced by undertaking a series of tasks or activities. Examples might include: irrigation systems or water supplies constructed, areas planted/developed, children immunised, buildings or other infrastructure built, policy guidelines produced, and staff effectively trained. Each component should have at least one contributing output, and may often have up to four or five. The delivery of project outputs should be largely under project management's control.

**Activities** refer to the specific tasks undertaken to achieve the required outputs. Examples for a new community water supply might include: further design, establishing water users committee and maintenance procedures, site preparation, collection of local materials, tank construction and pipe laying, digging soak pits, and commissioning. However, the Logframe matrix should not include too much detail on activities otherwise it becomes too lengthy and potentially prescriptive. If detailed activity specification is

required, this should be presented separately in an activity schedule/Gantt chart format and not in the matrix itself.

**Inputs** refer to the resources required to undertake the activities and produce the outputs, eg as personnel, equipment, and materials. However, inputs should not be included in the matrix format.

**Assumptions.** Assumptions refer to conditions which could affect the progress or success of the project, but over which project managers have no direct control, eg price changes, rainfall, land reform policies, non-enforcement of supporting legislation. An assumption is a **positive** statement of a condition that must be met in order for project objectives to be achieved. A risk is a **negative** statement of what might prevent objectives being achieved.

**Indicators.** Indicators refer to the information we need to help us determine progress towards meeting stated project objectives. An indicator should provide, where possible, a clearly defined unit of measurement and a target detailing the quantity, quality and timing of expected results.

**Means of verification (MOVs).** Means of verification should clearly specify the expected source of the information we need to collect. We need to consider how the information will be collected (method), who will be responsible, and the frequency with which the information should be provided.

## Vertical Logic

### If-then causality

Constructing the project description of the matrix involves a detailed breakdown of the chain of causality in the project design. This can be expressed in terms of:

- IF inputs are provided, THEN activities can be undertaken;
- IF activities are undertaken, THEN outputs will be produced;
- IF outputs are produced, THEN component objectives will be achieved;
- IF component objectives are achieved, THEN the project purpose will be supported; and
- IF the project purpose is supported, this should then contribute towards the overall goal.

Each level thus provides the rationale for the next level down: the goal helps define the purpose, the purpose the component objectives, and so on down the hierarchy.

## Management influence

The Logframe helps to indicate the degree of control managers have over the project. Managers should have considerable direct **control** over inputs, activities and outputs, but can only be expected to exert **influence** over the achievement of project purposes through the way in which outputs are managed. Project managers usually have no direct influence over achieving the goal, and can only be expected to monitor the broader policy and program environment to help ensure the project continues to be contextually relevant and the benefits likely to remain sustainable..

The **necessary** and **sufficient** conditions within the vertical logic are another way of viewing this issue. These indicate that:

- Achieving the purpose is **necessary but not sufficient** to attain the goal. This is because the project is but one of a number of projects or initiatives that contribute to the goal;
- Producing the project outputs is **necessary but may not be sufficient** to achieve the component objectives. Other factors beyond the project's control are again likely to have an influence on achievement of component objectives; and
- Carrying out project activities should be **necessary and sufficient** to produce the required outputs (although some risks will always remain).

In defining project outputs it is also necessary to recognise that there may be no single agency or manager who has complete control over their delivery. In the case of AusAID funded projects, many project outputs will be the result of the endeavours of both a local implementing agency(s) and an Australian contractor. In terms of contracting a project, a distinction then needs to be made between a **project** output and a **contractible** output (outputs or milestones that AusAID can contract a consultancy firm to deliver). This issue is further discussed in the section 'project outputs and contractible outputs'.

## Project components

A project component consists of a sub-set of inputs, activities and outputs that serve a single component objective. Components may be identified on the basis of a number of possible variables, including:

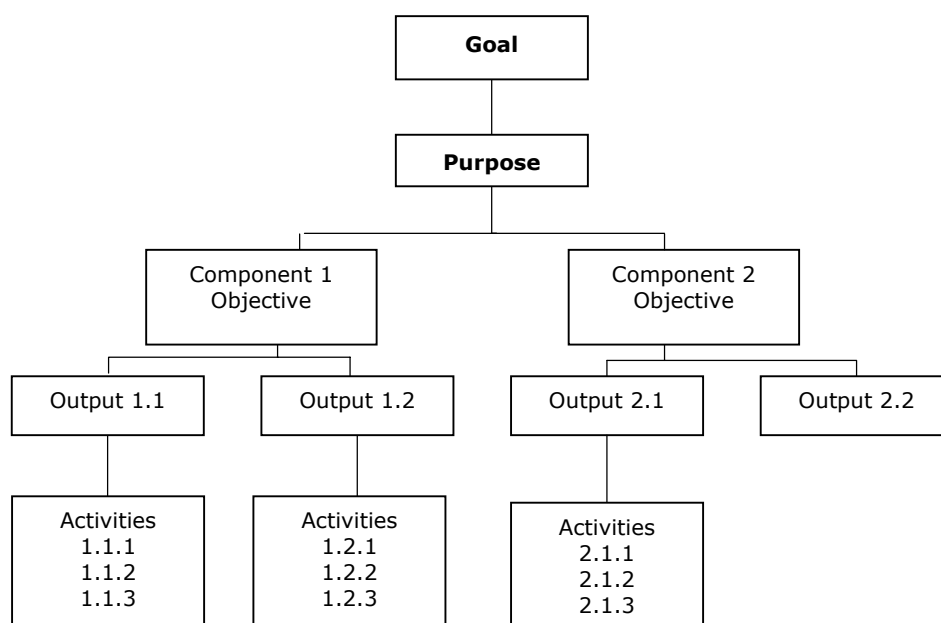
- **Technical features** (i.e a health project may have components focusing on malaria control, diarrhoeal disease, and acute respiratory infections)
- **Geographic locations** (i.e. a census support project focusing its capacity building activities on different provinces or regions and at the national level)
- **Target groups** (i.e. an HIV aids project focusing on raising awareness among schoolchildren, sex-workers, injecting drug users and health workers)
- **Management/organisational structures** (i.e. an agriculture project divided into extension, training, research and credit components to reflect the local structure of the Department of Agriculture)
- **Phasing of key project activities** (i.e a rural electrification project which requires a feasibility study, pilot testing, implementation and maintenance stages.
- Identifying appropriate component 'headings' or 'foci' will thus depend on a number of context specific factors. Agreement on what the components should be is best determined through a consultative process with key stakeholders.

## Reference numbers and flow charts

Using reference numbers is a useful device to help the Logframe user negotiate around the logic of the matrix, particularly when the matrix is presented on more than one page. This helps the reader understand which activities, outputs and purposes are linked and also provides a clear reference point when preparing activity, resource and cost schedules linked to the Logframe matrix.

Use of a flow chart format to present a summary of outputs, component objectives, purpose and the goal is also a useful device. Such a format structure is shown below in Figure 8.

**Figure 8 Project components flow chart**



## Writing clear objective statements

It is useful to standardise the way in which the hierarchy of project objectives are described in the matrix. This helps the reader recognise more easily what is a purpose, an output or activity statement. A convention can therefore be used whereby a goal, purpose and component objective statement is always written in the infinitive ('to do something'), an output is described in the future perfect ('something will have been produced'), and an activity is described in the present tense as an active verb ('do something'). An example of what is meant is provided below:

Goal	To contribute to improved community health on a sustainable basis
Purpose or Objective	To provide a clean, reliable and sustainable supply of water adequate for community needs
Output	A reticulated water supply will have been established/Village water supply maintenance technicians will have been trained.
Activity	Conduct site survey, build header tank, prepare training materials, design user pays system.

A common problem with poorly constructed Logframes is that the different levels of the project description tend to simply reword statements at other levels. Care should be taken to avoid this happening.

### Project outputs and contractible outputs

In preparing the Logframe matrix, the focus should be on defining the outputs that the project aims to produce. However, these outputs may not be the same as the outputs that the Australian contractor can be directly contracted to deliver. This is because the project outputs may require that actions be taken by other stakeholders that the managing contractor has no direct control over, eg partner government implementing agencies. This distinction is illustrated in Figure 9.

It is suggested that the distinction between project outputs and contractible outputs be defined in the text of the project design document, eg using a responsibility table for each output. The distinction should then be reflected in the scope of services and the memorandum of understanding, rather than being detailed in the Logframe matrix itself. The main reasons for recommending this approach are:

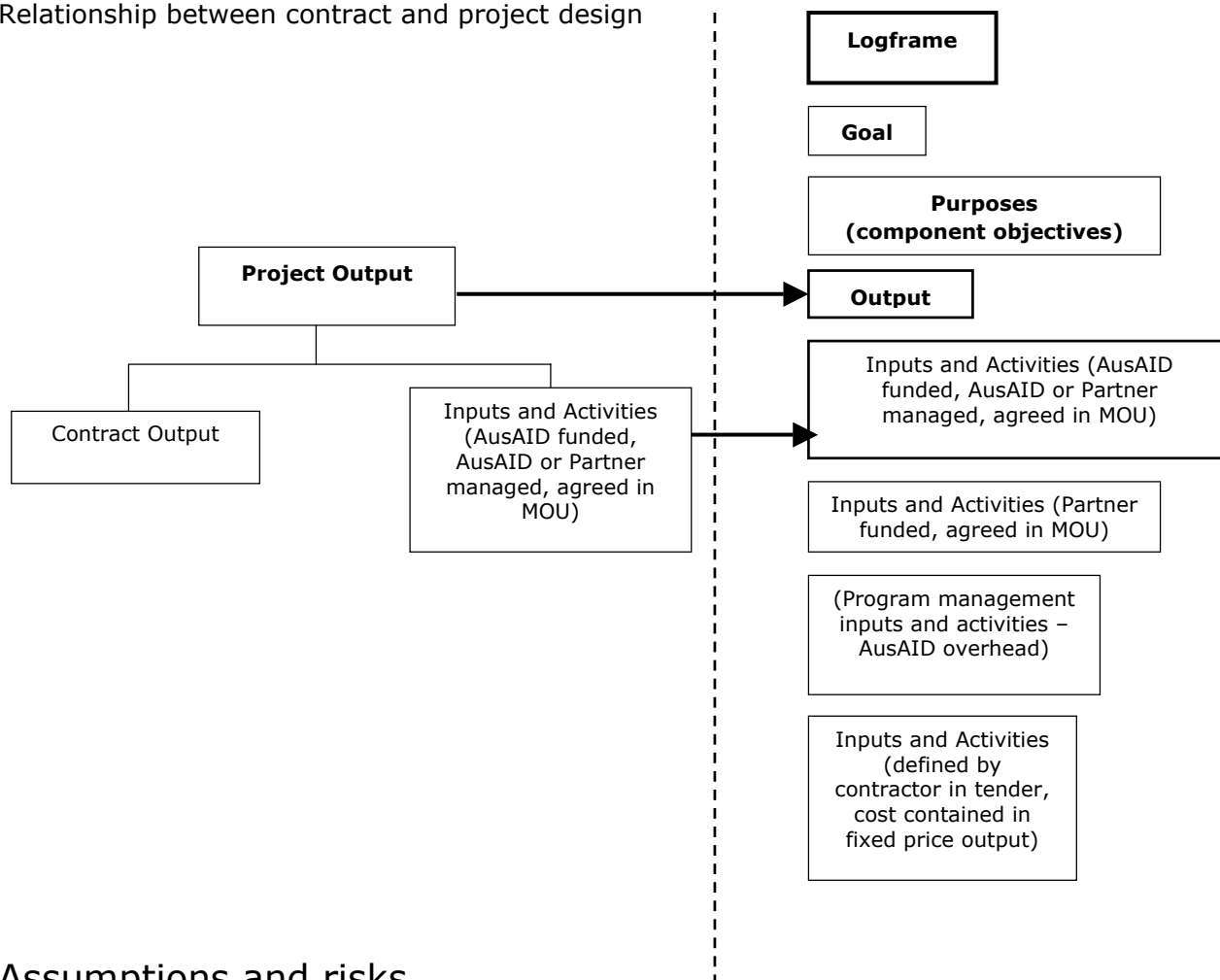
- The Logframe matrix should remain a **summary** of the development logic and rationale, rather than include detail of different stakeholder responsibilities or contractual issues;
- The project design document and the Logframe matrix should represent what AusAID and the partner government have **jointly** committed to;
- The scope of services (what AusAID contracts a provider to deliver) and the memorandum of understanding (what the partner government agrees to contribute) indicate the respective responsibilities for contributing to the delivery of project outputs; and
- The exact specification of contractible outputs needs (to some extent) to be negotiated between AusAID and the firm selected to implement.

*The AusGUIDELines 4: Preparing project design document provides further guidance on documenting the respective responsibilities of key stakeholders in delivering project outputs.*



**Figure 9 Project and contractible outputs**

Relationship between contract and project design



### Assumptions and risks

Projects are always subject to influence by factors outside the direct control of project managers. This is particularly so of rural and institutional development type projects which require the cooperation of a number of different stakeholder groups, are often implemented in poorly resourced and unstable environments, and require behavioural change on the part of participants. A project is never isolated from external events.

The fourth column of the matrix is used to highlight the external conditions (assumptions) that need to be fulfilled if the vertical logic of the project description is to hold true. This relationship between assumptions and the project description is shown in Figure 10.

Understanding and assessing the nature of these assumptions is an essential part of good design. Failure to realistically identify and address assumptions is a common source of project failure.

Some Logframe users prefer to talk about 'risks' in this fourth column. The distinction being that risks are **negative** statements about what might go wrong, whereas assumptions are **positive** statements about the conditions that need to be met if the project is to stay on track. Whether assumptions or risks are used, the purpose is the

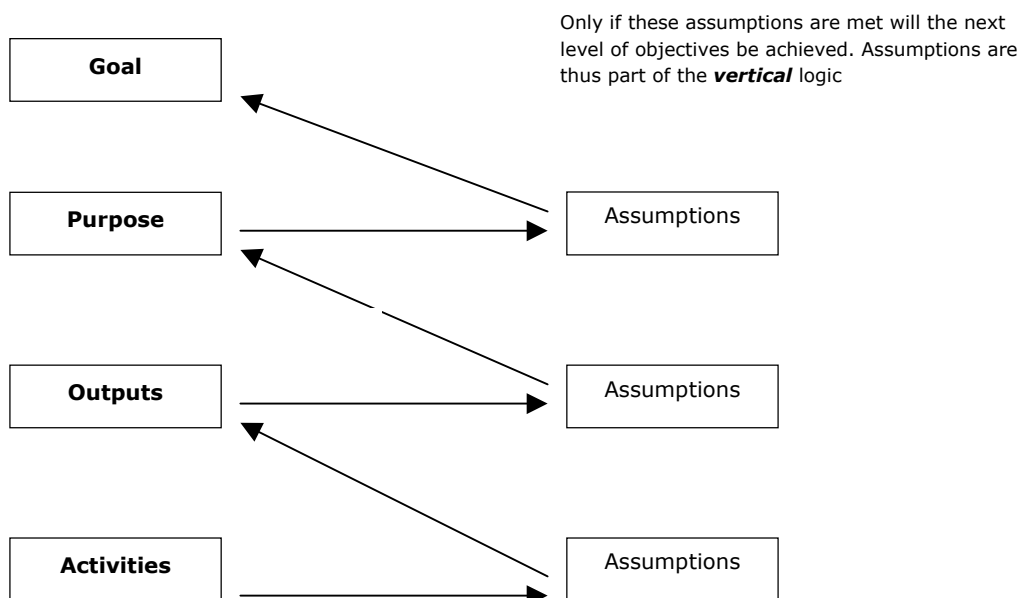
same, namely to assess and address external impacts on the project and improve where possible, the robustness of the design.

The Logframe provides a starting point for further risk assessment, stakeholder consultations on risk, and the preparation of a risk management plan, a sustainability analysis and a sustainability strategy. The logframe addresses one of four broad categories of AusAID risks, namely some of the risks or threats to effective and sustainable aid outcomes. In addition, a range of other tools designed to help identify risks can be applied. When conducting risk identification and assessment, one should also consider possible risks to output delivery/efficiency, to reputation and to capacity (refer to AusAID Risk Management Policy, [AusAID Circular No. 29 of 8 November 1999](#)).

For further information refer to **AusGUIDELines 5: Managing Risk**.

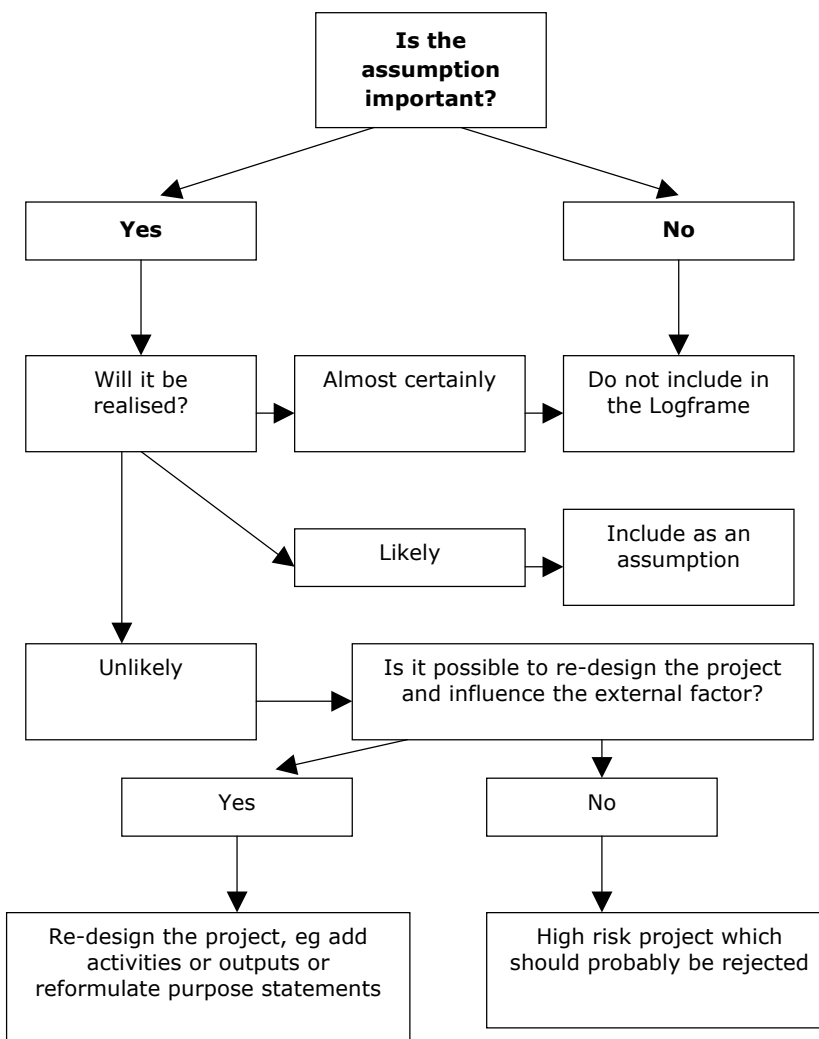
Reference on sustainability: **AusGUIDELines 18, Promoting practical sustainability**.

**Figure 10 Relationship between assumptions and objectives**



A decision tree to help analyse the importance of potential risks, and decide what should be done about them, is shown in Figure 11.

**Figure 11 Assumptions Decision Tree**



The difference between the assumptions documented in the Logframe matrix, and the risks analysed in the Risk Management Matrix, are thus that while the Logframe highlights those events/issues that remain outside project manager’s control, the Risk Matrix provides further analysis of how the design has been informed/modified to mitigate identified risks during the design process.

## Horizontal logic

### Link to monitoring and evaluation

The horizontal logic of the matrix helps establish the basis for monitoring and evaluating the project. The link between the Logframe and monitoring, review and evaluation is illustrated in Figure 12.

**Figure 12 The Logframe and monitoring and evaluation**

Logframe hierarchy	Type of monitoring and evaluation activity	Level of information
Goal	Ex-post evaluation	Outcomes/impact
Purpose	Evaluation at completion and ongoing review	Outcomes/effectiveness
Component Objectives	Ongoing review	Effectiveness and sustainability
Outputs	Monitoring and review	Output
Activities	Monitoring	Input/Outputs
Inputs		

This is of course a simplified framework, and needs to be applied and interpreted in a suitably flexible manner. For example, ex-post evaluation will include some element of assessing whether or not the purpose, component objectives and outputs have been achieved, and review will also assess performance in output delivery.

### Testing the project description

Once the project description and assumptions have been drafted (columns 1 and 4 of the matrix), the next task is to identify the indicators that might be used to measure and report on the achievement of objectives (column 2), and the source of that information (column 4). Because one reads **across** the matrix when analysing indicators and means of verification, this is referred to as the 'horizontal logic'.

In considering how the achievement of objectives might be measured/verified, one is required to reflect on the clarity of objective statements, how feasible they will be to achieve, and how they might be more specifically defined. This is part of the iterative nature of the analysis. Each part of the framework may need to be revisited as new tests of logic are applied.

### The level of detail

In most cases, the specification of indicators and means of verification should focus on the output, component objective and purpose levels of the hierarchy. It is usually not appropriate to specify indicators for every activity (if activities are included in the logframe), as this tends to clutter the matrix with too much detail. Activity and input monitoring systems are often better defined and established during implementation by the management team. If the goal is a broad statement of development intention at the sectoral or national level, and the project itself is providing only a small contribution, it may not be useful to include indicators and means of verification for the goal.

At the design stage, the level of detail that can be realistically expected in both the indicators and MOV columns will depend on (among other things):

- the type of project;
- the information available at the time of design;
- whether or not the team includes a member with monitoring and evaluation design skills; and
- how much time the design team has to do the work.

For example, a three person design team which is in the field for three weeks to prepare a complex institutional strengthening project, should not necessarily be expected to prescribe the project monitoring and evaluation arrangements in great detail. Rather, the horizontal logic of the matrix should be used as a means by which to:

- test the clarity of objective statements;
- indicate the type of information required and how it could be collected;
- provide a framework within which project implementers can design the detailed elements of the monitoring and evaluation system once implementation commences; and
- help determine the scope and scale of resources that will be required to establish and maintain an effective monitoring and evaluation function, and then include these resources in the project design and budget.

## Indicators

Indicators specify how the achievement of project objectives will be measured and verified. They provide the basis for monitoring project progress (completion of activities and the delivery of outputs) and evaluating the achievement of outcomes (component objectives and purpose).

Indicators are established in response to the question: 'How do I know whether or not what has been planned is actually happening or has happened?' We look for indications or signs to help us. For example: 'How do we know that more teachers have been trained this year? What would tell us that the training had had an impact on classroom performance? How do we measure progress towards the objective of strengthening community management capacity?' How do we know if these benefits are likely to be sustainable?'

There are no absolute principles about what makes a good indicator of physical achievement, however the **SMART** characteristics listed below (Specific, Measurable, Attainable, Relevant, Timely) are useful.

**Specific** Key indicators need to be specific and to relate to the conditions the project seeks to change. Cement delivered to a site is not a good indicator of the number of houses constructed. Likewise seedlings distributed from a nursery may not be a valid indicator of plants established. The horizontal logic of the Logframe matrix helps to test these criteria.

**Measurable** Quantifiable indicators are preferred because they are precise, can be aggregated and allow further statistical analysis of the data. However, development process indicators may be difficult to quantify, and qualitative indicators should also be used.

**Attainable** The indicator (or information) must be attainable at reasonable cost using an appropriate collection method. Accurate and reliable information on such things as household incomes and crop production from small-scale dryland farming are, for example, notoriously difficult and expensive to actually collect.

**Relevant** Indicators should be relevant to the management information needs of the people who will use the data. Field staff may need particular indicators that are of no relevance to senior managers, and vice-versa. Information must be sorted, screened, aggregated and summarised in different ways to meet different managers' needs. *(However, the Logframe matrix itself should not attempt to contain all this detail).*

**Timely** An indicator needs to be collected and reported at the right time to influence many management decisions. Information about agricultural based activities, for example, must often come within specific time periods if it is to be used to influence events in the whole cropping and processing cycle. There is also no point choosing indicators that can only tell you at the end of a project whether you succeeded or failed in meeting certain objectives. They may be lessons learned but the information comes too late for project personnel to act on.

Where possible, indicators should incorporate elements of quantity, quality and time. This is about setting targets for project implementers to work towards and against which progress can then be measured. As the saying goes, "what gets measured gets managed".

Caution should nevertheless be exercised when specifying quantified targets in the Logframe (rather than just the indicator or unit of measurement), particularly for projects which focus on process/capacity development outcomes. Two issues are important here:

- The Logframe should provide a summary of the project framework and not contain more detail than is necessary. Details of the proposed management information system should be documented separately, using the Logframe as a guiding framework; and
- Targets may be indicated during design, but the detailed assessment of what is really feasible needs to be undertaken and agreed upon by the implementing agencies once the project starts. Setting targets is an important part of good planning, but the quality and usefulness of such targets depends very much on when and by whom they are set. Design teams will often not have adequate information to confidently propose specific targets, particularly for process-oriented projects implemented in partnership with local agencies.

Two particular limitations associated with specifying indicators using the Logframe structure also need to be recognised:

- The indicators selected may be relevant to some, but not all, stakeholders. It cannot necessarily be assumed that all stakeholders have common interests and information needs; and
- Even within one agency, information needs will vary between levels of the institutional hierarchy. As the level of management changes, so do the level of detail required and the nature of indicators.

The indicators selected for inclusion in the Logframe are usually focused on meeting the information needs of selected stakeholders and at specific management level, eg project managers and AusAID. The point of view reflected in the hierarchy of objectives summarised in the project Logframe therefore needs to be broken down into sub-sets of objectives, indicators and targets for each level of management once project implementation starts.

## Means of verification

The different means (and costs) of collecting information must also be considered when choosing appropriate indicators. Some indicators may give the information you would ideally like to have, but when the means of getting this is carefully considered it might become impractical, eg too complex or expensive. The Logframe matrix is a useful analytical and presentational structure for systematically identifying and assessing appropriate 'means of verification' for each indicator that is chosen.

Once it is clear what information managers might require (the key indicators) it is then necessary to consider how this might be obtained.

The following questions should be asked and answered:

- **How** should the information be collected, eg sample surveys, administrative records, national statistics (as in the census), workshops or focus groups, observation, PRA or rapid rural appraisal techniques?
- **What source** is most appropriate? eg Who should be interviewed? Does the Bureau of Statistics already collect the required information? Is the source reliable?
- **Who** should do it? eg extension staff, supervisors, an independent team?
- **When** and how often should the information be collected, analysed and reported? eg monthly, annually, according to seasonal cropping cycles?
- **What formats** are required to record the data being collected?<sup>1</sup>

When developing answers to these questions, one of the main issues to keep in mind is the resource and capacity constraints that will be faced by those responsible for collecting the information. There is no point designing procedures which are too complex or costly as this will merely lead to frustration and disappointment in the outcomes. A balance must therefore be struck between what would be desirable in an ideal world and what is feasible in practice.

Project staff will almost certainly need to collect some primary information specific to their project's work, but should first look to using existing sources where these are available. For the 'big picture' the Bureau of Statistics, research studies, donor and business reports may be useful sources (these are often available but not accessible to those who might use them to support field level management and monitoring). At the local level community, government and other service agency records may provide relevant planning and management information for project implementers. The main point is to build on existing systems and sources (where possible and appropriate) before establishing new ones. Check what's already there before assuming it isn't.

Some examples of quantitative indicators that AusAID projects have commonly used to help measure and report on project outputs are shown at *Output indicator examples by KRA* (Annex 2).

## Indicators of process

Development is not only about the delivery of better services. It cannot be judged alone by indicators which measure quantifiable changes in such things as the income, health or

---

<sup>1</sup> In the process of working these matters out, it might well become apparent that some specific information requirements as originally specified may not be feasible to collect due to constraints of cost or complexity. Indicators or statements of objective may then need to be re-considered and revised to be made more realistic/practical.

educational level of targeted groups. Many development projects (particularly those focusing on process and capacity building objectives) place equal emphasis on bringing about changes in the way that groups of people (particularly disadvantaged groups) view themselves and are able to act in their own interests.

An example of possible indicators and means of verification for one process-based objective is shown in Figure 13 below:

**Figure 13 Example of indicators of development process**

Objective	Possible indicators	Means of verification
To increase awareness of, and community capacity to address, the local causes of environmental pollution.	Levels of awareness among different groups within the community (men, women, children) about specific environmental health and pollution issues.  Establishment of community based environmental health and management committee. Membership, meetings and number and type of activities initiated.	Sample survey at schools, of women's groups and of male household heads conducted at the beginning of the project and after two years. Conducted by environmental health officers using questionnaire to rank levels of awareness of specific issues  Records of elected committee members, regularity of meetings and minutes of decisions made. Analysed and scored against established criteria every six months by management committee members  Observation of how meetings are conducted and levels of participation. Undertaken by environmental health officers in line with planned schedule of meetings

## Some strengths and weaknesses of LFA

For all its potential advantages LFA provides no magic solution to identifying or designing good programs or projects, no matter how clearly understood and professionally applied.

To help avoid the common problems and possible dangers, those using the Logframe should:

- Emphasise the importance of the LFA **process** as much as the matrix **product**;
- Ensure stakeholders participate in the analytical process;
- Avoid using the matrix as a blueprint through which to try and exert control over the project;
- Treat the matrix as a presentational summary. Keep it clear and concise;
- Be prepared to refine and revise the matrix as new information comes to light;
- Expect the first Logframe to be a draft which will require reworking; and
- Do not place too much emphasis on detailed target specification within the matrix during the planning stages.

When LFA is used in a flexible manner and a consultative approach is taken, it is a powerful analytical tool to support project planning and implementation.

Figure 14 below provides a summary of some of the strengths and weaknesses of LFA.<sup>2</sup>

<sup>2</sup> Adapted from Des Gasper, "Logical Framework: A Critical Assessment", Institute of Social Studies



**Figure 14 Strengths and weaknesses of LFA**

<b>Issue</b>	<b>Potential strengths</b>	<b>Common problems</b>	<b>Possible dangers</b>
Vertical Logic	Provides logical link between means and ends. Places activity within broader development environment. Encourages examination of risks.	Getting consensus on objectives. Reducing objectives to a simple linear chain. Inappropriate level of detail (too much or too little).	Oversimplification of objective. Objectives become too rigid (blueprint). Ignoring unintended effects. Hides disagreements.
Horizontal Logic	Requires analysis of whether objectives are measurable. Helps establish monitoring and evaluation framework.	Finding measurable indicators for higher level objectives and 'social' projects. Establishing unrealistic targets too early.	Downgrading of less quantified objectives. Rigid targets. Information overload.
Format and application	Links problem analysis to objective setting. Visually accessible and relatively easy to understand. Can be applied in a participatory way.	Prepared too late and mechanistically. Problem analysis and objective setting not always linked. Risks marginalised. High demands for training and judgement.	The same fixed format applied in all cases. Used for top-down control. Can alienate staff. Becomes a fetish rather than a help.

*A selection of Logframe matrix examples, which include indicators and means of verification for component, purpose and goal level objectives (as well as outputs), are provided in **Logframe matrix examples** (Annex 3). Updated examples of good practice will be identified by the Quality Assurance Group and added to the Intranet site.*

## 1.4 Implementation, resource and cost schedules

Once the Logframe matrix is considered sound, the structure can then be used as a framework for preparing implementation, resource and cost schedules. These schedules should be clearly and logically linked to Logframe components and outputs through the use of appropriate reference numbers.

Activities leading to outputs can (as appropriate) be specified in more detail and scheduled on a Gantt chart format (implementation schedule). The inputs required for each set of activities and/or outputs can then be specified and also scheduled over time. Finally, the cost of inputs can be determined and a project budget estimate and cash flow calculated.

*Guidelines on preparing these schedules are available in **AusGUIDELines 7: Preparing project schedules**.*

## Annex 1 – Steps in conducting problem tree analysis

### ***Identifying and listing the main problems***

- Explain the purpose of the exercise and the context within which it is taking place, eg preparation of a primary health care project. Explain the problem tree method and the input expected from the participants. Provide some examples of the cause and effect relationship before starting, emphasising the importance of identifying root causes;
- Using contributions from the group, list all the negative statements about the situation you are analysing. This can be undertaken as a brainstorming session; and
- Print each problem statement in clear language on a card and display this on some suitable wall space.

### ***Identifying core problems***

- Through discussions, identify a consensus core problem - the one(s) which appear to be linked to most negative statements.
- Print a precise definition of the core problem on a card (if the existing statement requires further clarification).
- Display the card on a wall (or on the floor) so that the whole group can clearly see it.

### ***Identifying cause and effect***

- Begin to distribute the negative statement cards according to whether they are 'causes', i.e. leading to the core problem, or 'effects', ie resulting from the core problem. Do this until all causes are below the core problem and all effects are above the core problem. At any stage in the exercise, those statements that are considered to be unclear should either be more clearly specified or discarded. Problems that are clear but very general in nature and which affect not only this issue but would apply to almost any development problem can be treated as 'overall constraints' and moved to the side of the main problem tree. This helps keep the core problem tree focused and manageable. You can be guided in this by considering whether or not the problem is likely to be one which can be addressed by a project based solution. If not, it is a constraint.
- Then the guiding questioning for further structuring the statements into a problem tree becomes "What leads to that?" Choose any negative statement printed as a problem on the cards and ask: "What leads to that?" Then select from the cards the most likely cause of the problem, and place it below the chosen statement.
- If there are two or more causes combining to produce an effect, place them side by side below the resulting effect.
- After you have placed the card or cards for each relationship, pause to review. Then ask the group if there are more causes leading to that problem.
- Similarly you must ask if there are any more effects resulting from that problem.
- If there are multiple effects resulting from a cause, place them side by side and above the cause(s).

***Checking the logic***

- At each stage you should invite participants to move the cards, i.e. to suggest or hypothesise other relationships.
- When you have placed all cards, review the structure to ensure that related streams of cause and effect are close to each other on the problem diagram.
- Choose one of the cards at the top line of your Problem Tree, then work back through the diagram according to the guiding question: "What leads to, or causes, that?" in order to check the logic or completeness of your cause-effect structure.

***Drafting the problem tree diagram***

- Then draw in vertical links to show cause-effect relationships, and horizontal links to show joint causes and combined effects; and
- Copy your diagram onto a sheet of paper and distribute it for further comment and variations within an appropriate time period.

***Dealing with overall constraints***

Overarching development problems that are identified during the analysis, but which cannot be addressed directly by a project based intervention, should be taken out of the main problem tree diagram and considered as overall constraints. Examples might include: institutional corruption, lack of government revenue, high population pressure. These overall constraints should then be considered as part of the risk and sustainability analyses undertaken later in the project preparation process.

## Annex 2 - Examples of outputs for key result areas

Below are some examples of quantitative outputs that AusAID project managers have commonly used to help measure and report on project performance. They have been grouped by key result area (KRA). The indicators listed do not address issues of quality.

### **KRA Improve health**

- Number of ministries, provincial governments and district administrations assisted;
- Number of hospitals, clinics, and outreach services built or refurbished;
- Number of people trained, (by gender and field of study; long and short-term);
- Number of men, women and children (by gender) with access to improved primary health care services;
- The sustainability of the improved primary health care services;
- Number of men and women with improved access to voluntary family planning and reproductive health services;
- Number of adults and children (by gender) immunised;
- Number of men, women and adolescents (by gender) with improved access to HIV/AIDS and STDs prevention, care and counselling; and
- Number of activities that encompass health promotion principles.

### **KRA Increase access and quality of education**

#### Education indicators

- Number of people with improved access to basic education (by gender);
- Number of people with improved access to technical and vocational education (by gender);
- Number of books/desks distributed and/or buildings constructed (related to access);
- Number of national tests conducted (by gender) (results by gender if possible);
- Number of teachers trained/employed (by gender);
- Gender-sensitive curricula accredited and distributed to students (by gender);
- Number of women and men principals trained;
- Number of vocational trade curricula developed/accredited;
- Improved retention rate (by gender); and
- The sustainability of the improved education services.

#### Training indicators

- Number of people trained through scholarships (by gender and field of study);
- Number of people trained through short term training (by gender); and
- Number of people trained in regional countries (by gender and field of study).

### **KRA Promote effective governance**

- Number of government and non-government personnel who received training (by gender);

- Number of advisers and experts placed, (by range of expertise and by gender);
- No and type of institutions strengthened;
- Number of non-government organisations strengthened;
- Number of people with improved access to microfinance and microenterprise development services (by gender);
- Number of legal sector and election activities supported; and
- The sustainability of the improvements made.

### **KRA Provide essential infrastructure**

- Number of people with improved access to essential infrastructure (by gender);
- No and type of infrastructure services provided or improved (eg water supply and sanitation services, energy, transport and communications). Refer to project reports;
- Number of people trained (by gender; long and short term training);
- Number of 'infrastructure' agencies strengthened, eg local councils, community organisations, national institutions, state-owned enterprises;
- Evidence of support for creation of enabling environment for both public and private financing and management of infrastructure; and
- The sustainability of the improvements made.

### **KRA Improve agriculture and rural development**

- Number of people receiving development food aid assistance (by gender). Refer to project reports;
- Number of people with improved access to rural services (by gender). Refer to project reports;
- Number of farmers implementing new approaches/technologies (by gender). Refer to project reports;
- Number of people trained (by gender and long-term and short-term). Refer to Activity Management System; and
- The sustainability of the improved services.

### **KRA Maximise environmental sustainability**

- Expenditure and type of assistance in support of international environmental programs;
- Number of people trained in environmental impact assessment and environment management (by gender) and long and short-term);
- Number of Environmental Protection Agencies strengthened, including land and water management agencies, local councils, NGOs and community groups;
- Number of environment conservation projects implemented; and
- The sustainability of the improved services;

### **KRA Promote gender equity**

- Number of people trained (by gender; long and short term);
- Number of men, women and children with access to services, eg primary health care, rural services (by gender);
- Number of girls and boys enrolled in school;

- Number of local women's and men's groups established;
- Number of women and men with improved access to markets; and
- Number of women in decision-making positions.

**KRA      Deliver humanitarian and emergency assistance**

- Number of people provided with humanitarian assistance. Refer to project reports;
- Number of people provided with emergency assistance. Refer to project reports;
- No and type of longer-term preventative, preparedness and rehabilitation measures put in place; and
- Number of people trained (long-term and short-term). Refer to Activity Management System.

## **Annex 3 - Logframe Matrix examples**

A selection of 'good-practice' logframe matrices are available on the Good Practice site.

Currently attached below is the logframe matrix from the 'Community Forestry Project' in Vietnam.

## Community forestry project - Vietnam

	Project description	Key indicators	Means of Verification	Assumptions/Risks
	<p>Goal</p> <p>To increase wood supply and farmer incomes, and to help arrest the process of soil degradation in the project area on a sustainable basis.</p>	<p>Volume of wood harvested.</p> <p>Family income from tree products.</p> <p>Soil structure and fertility.</p>	<p>Annual sample survey of farmers conducted by DFOs.</p> <p>Soil sample survey in years one and four by FRI.</p>	
1	<p>Component Purpose 1</p> <p>To establish improved community based forest management practices among members of the Ben Da Farmers Association (BFA).</p>	<p>No. of 'active' BFA members.</p> <p>% of farmers 're-adopting' recommended practices in subsequent years and their understanding of key husbandry and/or management practices.</p>	<p>Association membership and meeting attendance records kept by BFA.</p> <p>Annual sample survey of farmers conducted by DFOs.</p>	<p>Market liberalisation policies are maintained.</p> <p>Market prices for commercial tree products exceed production costs.</p>
1.1	<p>Outputs</p> <p>Land distribution will have been completed for garden forest and woodlots for 1 600 families.</p>	<p>Area distributed and no. of beneficiaries.</p>	<p>Land register kept by district people's committee.</p>	<p>At least 40 farmers are willing and able to become VEWs.</p>
1.2	<p>40 village extension workers will have been identified, trained and resourced.</p>	<p>No. of VEWs trained, average no. of days training conducted and VEW kits distributed.</p>	<p>VEW training register kept by DFOs and Forestry Adviser, reported quarterly. Kit procurement records.</p>	<p>District people's committee provides payment in rice for VEWs working with the project, and these farmers continue to work with the project after training.</p>
1.3	<p>Farmer field days will have been conducted, supported by appropriate extension and awareness materials.</p>	<p>No. of farmer field days conducted, topics, location and attendance.</p>	<p>Field day records kept by VEWs and reported quarterly.</p>	<p>Extension.</p>
1.4	<p>BFA executives and staff will have been trained in management, accounting and administrative skills.</p>	<p>No. of people trained by topic and self assessed quality of the training provided.</p>	<p>Training reports prepared by contracted trainers and training evaluation reports completed by trainees. Ex-post assessment 6 months after training</p>	
2	<p>Component Purpose 2</p> <p>To expand, diversify and improve the tree planting and forest management program in the project area.</p>	<p>Ha. planted by species, survival rates, growth rates.</p> <p>% of targeted farmers adopting recommended practices.</p>	<p>Annual sample survey of farmers conducted by DFOs and Forestry Adviser.</p>	<p>Farmers find the trees and technology on offer relevant to their needs and have the time and resources to participate.</p>
2.1	<p>Outputs</p> <p>Four nurseries and input supply stores will</p>	<p>No. of nurseries established , stock and</p>	<p>Nursery inventory and distribution records kept by nursery and input supply managers. reported quarterly.</p>	<p>Farmers are able to transport seedlings from the central nurseries to their gardens.</p>



	<b>Project description</b>	<b>Key indicators</b>	<b>Means of Verification</b>	<b>Assumptions/Risks</b>
2.2	have been established. Garden forest will have been established for 1 600 families.	distribution records.	managers, reported quarterly. VEW field journal planting records, reported quarterly.	to their gardens. An adequate supply of quality seeds can be obtained.
2.3	Woodlots will have been established for 400 families.	Ha. planted by species and no. of families.		
2.4	Protection/economic forest will have been established in selected areas of 'bare' hills for community use.	Ha. planted by species and no. of families.	FRI trial reports kept by field officer, annually.	
2.5	Agroforestry species trials will have been established.	Ha. Planted. No. of trials by species and location.		
3	Component Purpose 3 To strengthen the technical and extension skills of the district forestry service officers working with farmers in the project area.	Client satisfaction with the knowledge and approach of DFOs in the project area.	Annual sample survey of farmers conducted by BFA (Forestry Adviser).	The District Forestry Service does not prematurely transfer trained officers from the project area. DFS continues to actively support project objectives.
	Outputs DFOs will have been trained in extension and technical skills. DFOs will have been trained in project management, monitoring and reporting skills.	No. of days training conducted per DFO by topic. "	DFO training records kept by Forestry Adviser and reported quarterly. "	The DFS maintains its commitment to a new approach to extension based on a partnership with farmers. Management reporting systems are accepted as relevant and useful by DFOs

Project Description	Indicators	Means of Verification	Assumptions
<p>Goal</p> <p>To contribute to the protection of biological resources in the Maldives and thereby support long-term sustainable development.</p>	<p>Species numbers and diversity within protected areas.</p> <p>Reduction in coral mining.</p> <p>Area protected by classification.</p>	<p>Longitudinal marine surveys conducted by Marine Research Section with support from other stakeholders.</p> <p>Protected areas database managed by Environment Unit.</p>	
<p>Component 1: Institutional strengthening</p> <p>Purpose</p> <p>To develop government capacity to design and manage a system of protected areas.</p>	<p>Actual achievement of component 1 and 2 outputs against plan.</p> <p>Qualitative assessment through interviews and focus groups.</p>	<p>Project progress reports.</p> <p>Yr. 3 evaluation of project progress and initial impact.</p>	<p>Government uses enhanced capacity to support effective community participation in the planning and management of protected areas (PAs).</p>
<p>Output 1.1</p> <p>Additional GOM staff recruited, a local Project Director and Project Manager appointed and operational resources provided through the GOM budget.</p>	<p>No. of staff (M/F) working on PAS programs.</p> <p>Level and adequacy of GOM budget appropriations and expenditure.</p>	<p>GOM staffing records.</p> <p>Interviews with agency management.</p> <p>GOM budget documents and expenditure records.</p>	<p>Adequate financial resources are appropriated by GOM and released in a timely manner.</p> <p>Appropriately skilled and motivated staff are available and recruited.</p>
<p>Output 1.2</p> <p>Training needs of selected government staff identified and appropriate training activities designed and delivered.</p>	<p>Training Needs Analysis completed.</p> <p>No. of staff trained (M/F) by topic and type of training.</p> <p>% of trainees assessing training as useful against agreed rating scale.</p>	<p>TNA report.</p> <p>Training completion reports</p> <p>Training evaluation reports.</p>	<p>Trained staff continue to work with the project for a reasonable period after training.</p> <p>Training is relevant and focused on key competencies.</p> <p>Places are available at Australian institutions for relevant post-graduate courses.</p>
<p>Output 1.3</p> <p>Legislative amendment requirements identified and new draft regulations prepared.</p>	<p>Draft regulations prepared and endorsed by project coordinating committee (PCC) and NCPE.</p>	<p>Legal expert's final report and PCC minutes.</p>	<p>Recommended regulations are acceptable and endorsed in a timely manner.</p>
<p>Output 1.4</p> <p>Operational Guidelines for Protected Area Systems management prepared.</p>	<p>PAS guidelines approved by PCC, printed and distributed.</p>	<p>Guidelines on file, distribution record, and PCC minutes.</p>	<p>There is institutional and management support for using and following the</p>

Project Description	Indicators	Means of Verification	Assumptions
			guidelines.
Output 1.5 Biodiversity, socio-economic and cultural surveys carried out in identified priority areas and an appropriate data base established.	No. of areas identified, area, type, pop'n. No. of surveys conducted by type. Data entered and accessible from database.	Survey reports. Database printouts, accessibility, quality.	Consensus can be reached on priority areas. The inventory and database can be locally managed and sustained after initial set-up and training.
Output 1.6 A financing framework for protected area management prepared.	Financing framework prepared and endorsed by PCC.	Framework document on file and PCC minutes.	A workable financing framework is endorsed and established with stakeholder support.
Component 2: Protected area establishment Purpose To establish 3 pilot protected areas which have broad based community support	3 pilot areas established in law Management plans, regulations and local management structures in place. No. of active conflicts over resource use and recorded violations of regulations	Government gazette. PA monitoring reports. PA monitoring reports.	The regime established in pilot areas provides adequate benefits to community and private sector stakeholders to ensure their sustained support.
Output 2.1 A culturally appropriate framework and program for stakeholder consultations and participation devised and carried out	Participation program and method documented and endorsed by PCC No. of consultations, type, purpose, attendance (M/F)	Project files and PCC minutes. Aggregated field report records.	These consultations result in a genuine partnership approach to PA management based on mutual interest and trust.
Output 2.2 Three pilot protected areas identified in consultation with community members and private sector stakeholders	Signed MOU between stakeholders endorsed by PCC	Project files and PCC minutes. Stakeholder interviews.	Stakeholders can effectively negotiate a consensus position on resource management issues.
Output 2.3 Community training/information needs identified and a program of appropriate activities carries out	Training/information needs assessment report produced and approved by PCC. No. of training activities, type, attendance (M/F) % of trainees assessing training as useful against agreed rating scale	Project files and PCC minutes. Project training completion reports.	The information provided leads to better understanding and informed participation among community stakeholders. Training effectively supports improved understanding, skills development and

Project Description	Indicators	Means of Verification	Assumptions
		Training evaluation reports files.	behavioural change.
Output 2.4 An analysis of the biological and socio-economic costs and benefits of implementing alternative management regimes within pilot areas carried out	Cost benefit assessment completed and documented, identifying impact on different stakeholder groups Awareness of options among stakeholders effectively raised	Project files. Awareness survey.	The information is effectively accessed by stakeholders and provides useful management information to support PA design.
Output 2.5 Management plans for three pilot protected areas jointly prepared, endorsed by all key stakeholders and implemented	Quality of public participation process Memoranda of Agreement signed by stakeholders and endorsed by PCC Gazettal of protected areas	AMC, PCC and TAG assessments. Project files. Stakeholder interviews.	Management plans are implemented and provisions effectively enforced.
Output 2.6 Community based monitoring systems established	Availability of appropriate information at the community level to support protected areas management	Ranger reports. Focus group meetings with stakeholders.	Information is effectively disseminated to stakeholders and used to address PA management problems.
Component 2: Education and awareness Purpose To increase community awareness and understanding of the benefits and costs of environmental conservation and to promote their input to establishing protected areas.	Change in knowledge, attitudes and practices.	Longitudinal KAP surveys in targeted areas. Designed and supervised by CRMS.	Increased awareness results in changed attitudes and behaviour.
Output 3.1 Informational materials and guidelines on the establishment of protected areas prepared for public and community use.	Type, no. and quality of materials provided. Audience response.	Education development centre records. Focus groups or other qualitative data collection techniques.	Materials are effective and accessible to target groups.
Output 3.2 Radio and television programmes on protected areas issues prepared and	No. and quality of programs produced and total airtime.	Education development centre and Voice of Maldives records.	Programs are watched/listened to by the public and provide relevant and useful

<b>Project Description</b>	<b>Indicators</b>	<b>Means of Verification</b>	<b>Assumptions</b>
broadcast.	Audience response.		information.
Component 4: Planning and management support Purpose To effectively manage and report on Australian contributions to the project and coordinate activities with GOM stakeholders.	No. of inception workshops, duration, location, attendance (M/F). Planned/actual achievement of outputs. Planned/actual expenditure. Satisfaction of GOM and AusAID with contractor performance.	Inception workshop reports. Project progress reports. Project financial reports. Contractor performance assessment reports.	An effective working relationship is established with GOM counterparts.
Output 4.1 A project office and management/monitoring systems established and equipment procured.	No. of staff in place (M/F). Quality of service. Equipment procured and maintained.	Project staffing records. PCC and AusAID assessment reports. Equipment register.	Appropriately skilled and motivated Australian long-term TA is recruited. Equipment is adequately maintained. AusAID and MC provide adequate resources.
Output 4.2 A Technical Assistance and training schedule designed and implemented.	Schedules produced and approved by PCC Mandays TA provided (M/F), purpose, location.	Project TA and training records.	Training and short-term TA is appropriately designed and delivered and impacts positively on work performance.
Output 4.3 Regular project coordinating committee meetings held and minutes produced.	No. of PCC meetings and attendance (M/F) Timeliness and quality of PCC minutes.	PCC agendas and minutes.	Meetings are professionally managed, attendance is adequate and decisions are effectively acted upon.
Output 4.4 An inception report, annual plans, regular progress reports and a completion report prepared and submitted to AusAID and the GOM.	Reports completed on time, meeting established quality criteria and endorsed by the PCC.	GOM, managing contractor and AusAID files.	Reports meet required quality criteria, provide clear and useful management information and are acted upon, as appropriate, by PCC members.